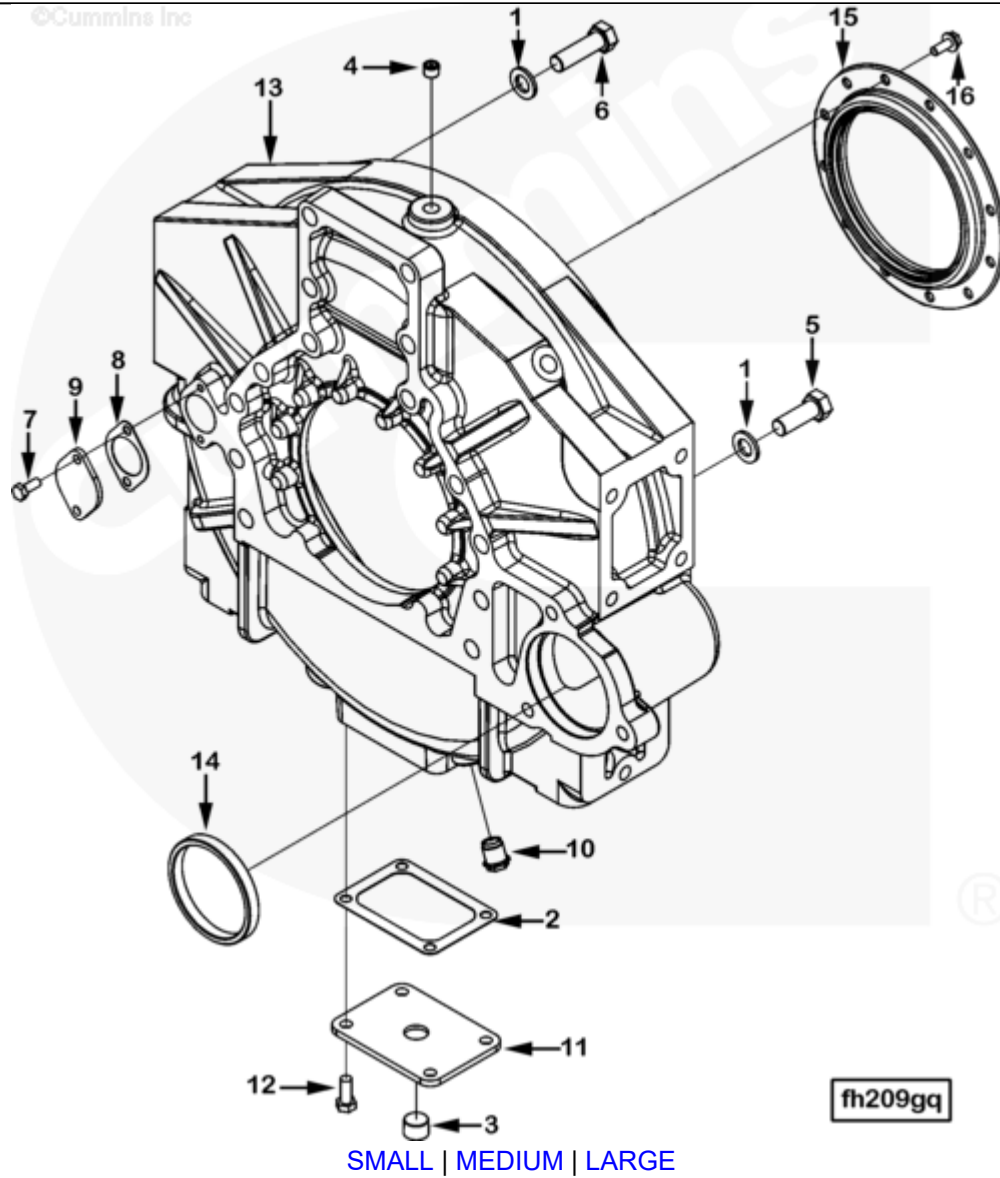




Parts Catalog - Option Detail

Electronic Parts Catalog - Option Detail				
Option	Group	Graphic	Film Card	Date
FH2158-11	16.01	fh209gq	II	28-NOV-06
Engines	ISM CM570, ISM CM570/870, ISM CM875, ISM CM876, ISM CM876 E, ISM11 CM876 M103, ISM11 CM876 SN, M11 CELECT, M11 CELECT PLUS, M11 MECHANICAL, QSM11 CM570, QSM11 CM876			



Cart	Ref No	Part Number	Part Description	Required	Remarks
View My Cart					
		FH2158-11	Flywheel Housing		
					Flywheel Housing

					Flywheel Hsg SAE Size or
					Type: 1
					Flywheel Housing Material:
					Aluminum
					Engine Mount Type: Vertical
					Pads
					Transmission Mounting Hole
					Nomenclature: SAE (inch)
					Starting Motor Mounting
					Screws: SAE
					Starter Center Distance:
					275.55mm (10.85")
					Starter Bore Diameter: 92.06
					Clutch Type Provision: Dry
					Tachometer Sensor Mtg
					Hole Nomenclature:
					Quad 2, 3/4 -16
					Quad 3, 3/4 -16
					Quad 4, 3/4 -16
					Sensor Mtg Hole Count: 1
					Rear Gear Drive: No
					Starter Loc: 3rd Quadrant
					Engine Position: Vertical
					Standard
<input type="checkbox"/>	1	127316	Plain Washer	14	5/8 in.
<input type="checkbox"/>	2	182459	Water Header Cover Gasket	1	
<input type="checkbox"/>	3	3008469	Pipe Plug	1	3/4 NPT
<input type="checkbox"/>	4	3013786	Pipe Plug	1	3/8 NPT.

<input type="checkbox"/>	5	3018006	Hexagon Head Cap Screw	2	M16 x 2.00 x 45
<input type="checkbox"/>	6	3022148	Hexagon Head Cap Screw	12	M16 x 2.00 x 55
<input type="checkbox"/>	7	3025802	Hexagon Head Cap Screw	2	M8 x 1.25 x 20
<input type="checkbox"/>	8	3026134	Cover Plate Gasket	1	
<input type="checkbox"/>	9	3026135	Access Hole Cover	1	
<input type="checkbox"/>	10	3063779	Threaded Plug	3	3/4 - 16 UNF
<input type="checkbox"/>	11	3161671	Cover Plate	1	
<input type="checkbox"/>	12	3335044	Hexagon Head Cap Screw	4	M10 x 1.50 x 25.
<input type="checkbox"/>		3417505	Flywheel Housing	1	
	13	3417504	Flywheel Housing	1	
<input type="checkbox"/>	14	3819822	Sleeve	1	
<input type="checkbox"/>		4089542	Rear Seal Crank Kit	1	Dry Clutch/Non- REPTO
	15	4923644	Oil Seal	1	Serviced as 4089542
<input type="checkbox"/>	16	4083121	Hexagon Flange Head Cap Screw	12	